



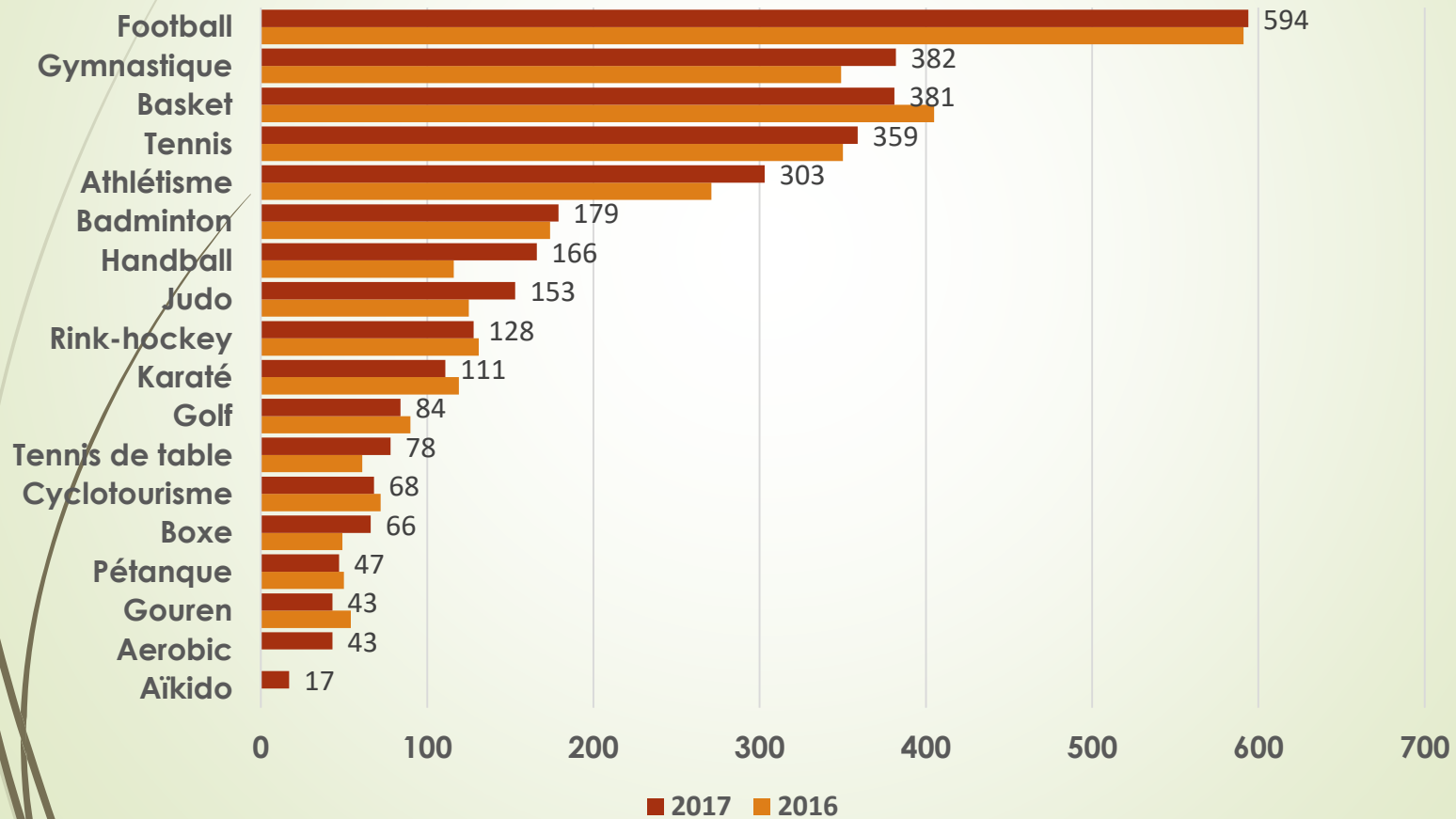
Nos effectifs

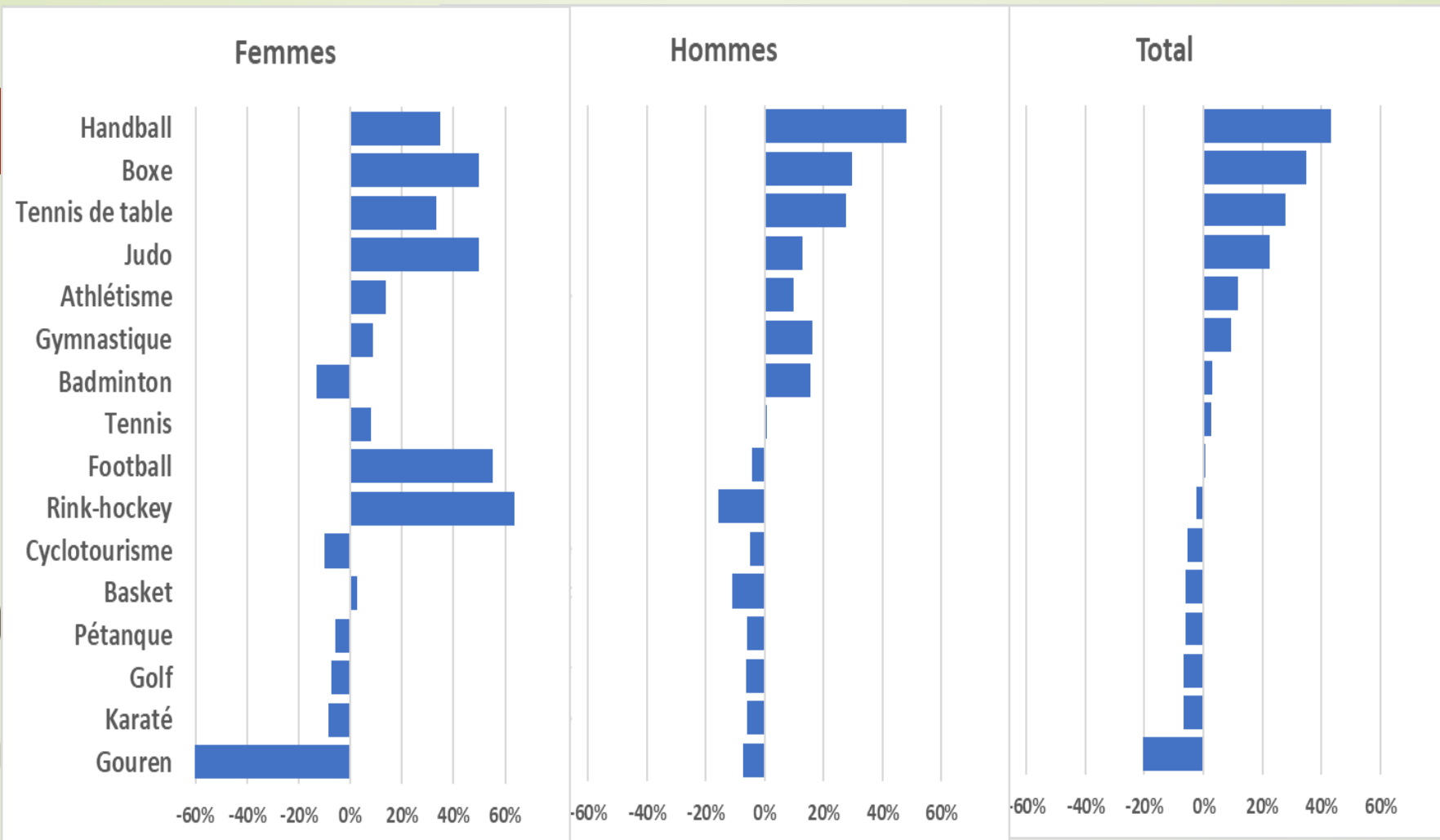


Croissance soutenue

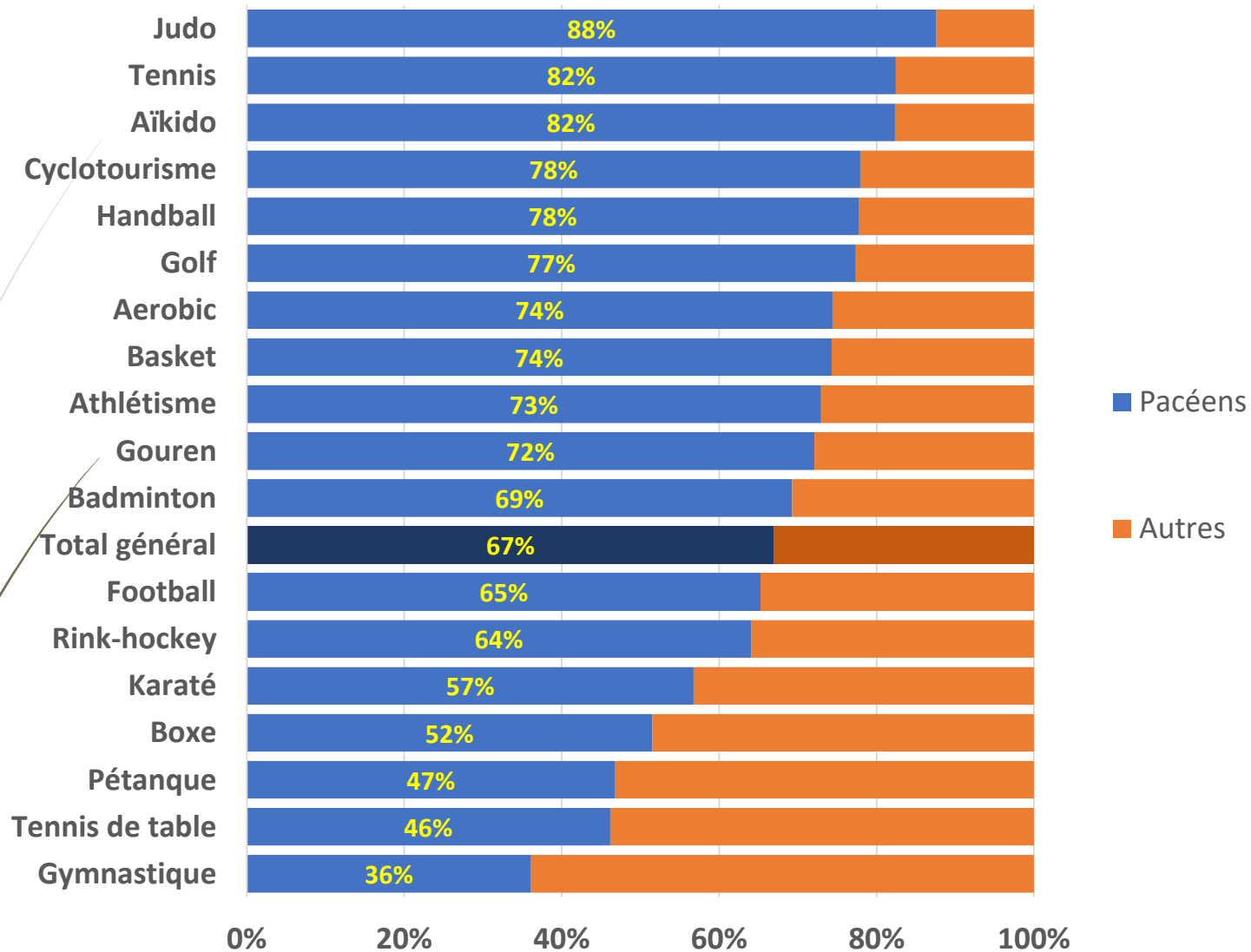
	2014-2015	2015-2016	2016-2017
Femmes	1 002	1 041	1 201
Hommes	1 963	1 966	2 001
Total	2 965	3 007	3 202

Près de 600 licenciés au foot

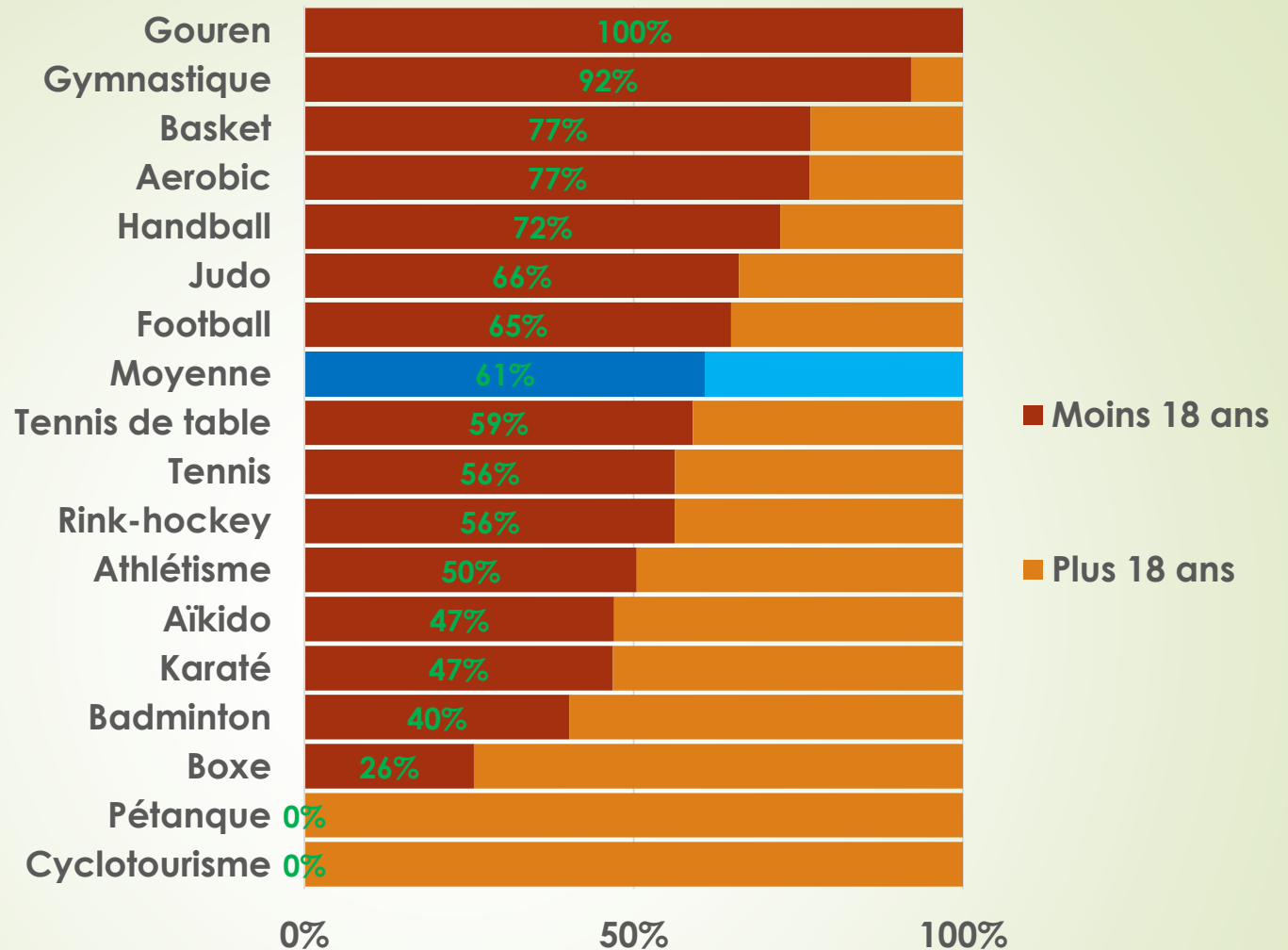




Forte croissance du handball



67 % de pacéens



60% de moins de 18 ans